



CARL F. W. BORGWARD G.M.B.H.  
KUNDENDIENST (CUSTOMERS SERVICE) DEPT.  
AUTOMOBIL- UND MOTOREN-WERKE  
BREMEN - GERMANY

RE.:

**Frontwheel Suspension**  
**Borgward "Isabella"**

**V**  
**181**

Bremen, 26th June 1956

To all  
Authorized Borgward Dealers and Workshops

Dear Sirs,

Within the scope of further development and improvement of various constructional elements of above mentioned type a new type of front wheel suspension was developed, which shall be fitted as standard after proving of fitness.

To find the confirmation that these new elements stand the test satisfactorily we have decided to equip at first appr. 2000 cars with them.

To obtain an objective idea these cars were supplied to well known countries and sales territories with their different conditions, be it in regard to road conditions or in view of especially emphasized factors. This is therefore a question of trial on a wide basis for which we would like to oblige our Authorized Dealers to cooperate in this matter with us. We expect you to treat this matter with the necessary understanding so that the success of this action is warranted.

The cars are recognizable by the lower wishbone support, which is deviating from the standard type. Instead of the usual universal joint bearings and stubaxle bolts with threading, carrying joints in shape of a ball were installed which are fitted to the bottom wishbone and which are secured on the stubaxle by the wedge type screws, which are fitted as standard.

Within this scope it is essential to check the condition of these ball carrying joints and their attachment when inspection operations as well as the specified lubrication service are carried out. An exact control of the bottom wishbone on the stubaxle - guide side is also desirable.

Cars which are no longer maintained by your workshop after delivery must be brought back for inspection every 3000 kms or 2000 miles. Please inform the owners of these vehicles accordingly.

In case any troubles or damages are noticed in this connection, kindly notify us at once. It is not intended for the present to keep spare parts in stock. The vehicles in question can be kept in running condition without loss of time or difficulties by the installation of the standard wishbones and stubaxles with universal.

Kindly note that this activity comprises the following cars:

Saloon, TS type and convertible car Ch.No. 743013 - 745173  
Station Wagon . . . . . Ch.No. 232740 - 232902

In regard to the general importance of this matter kindly instruct your workshop staff accordingly.

Yours faithfully,

**CARL F. W. BORGWARD G. M. B. H.**  
**KUNDENDIENST**  
**(CUSTOMERS SERVICE)**  
**DEPT.**

signed Grimberg

signed Wolff

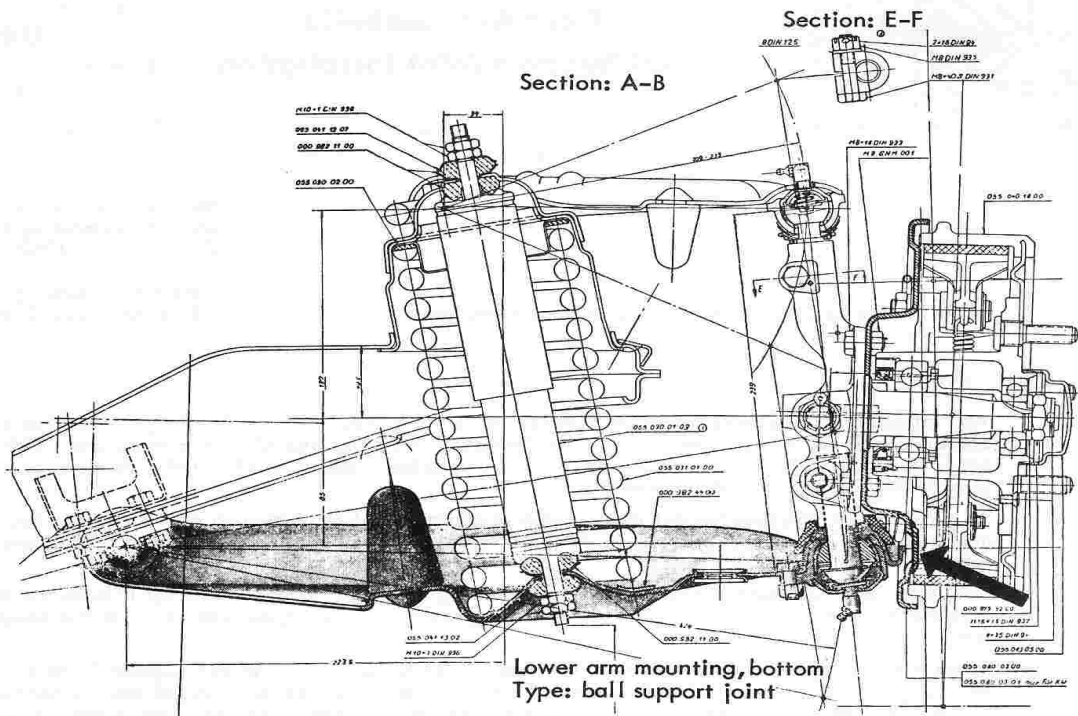


Figure 1

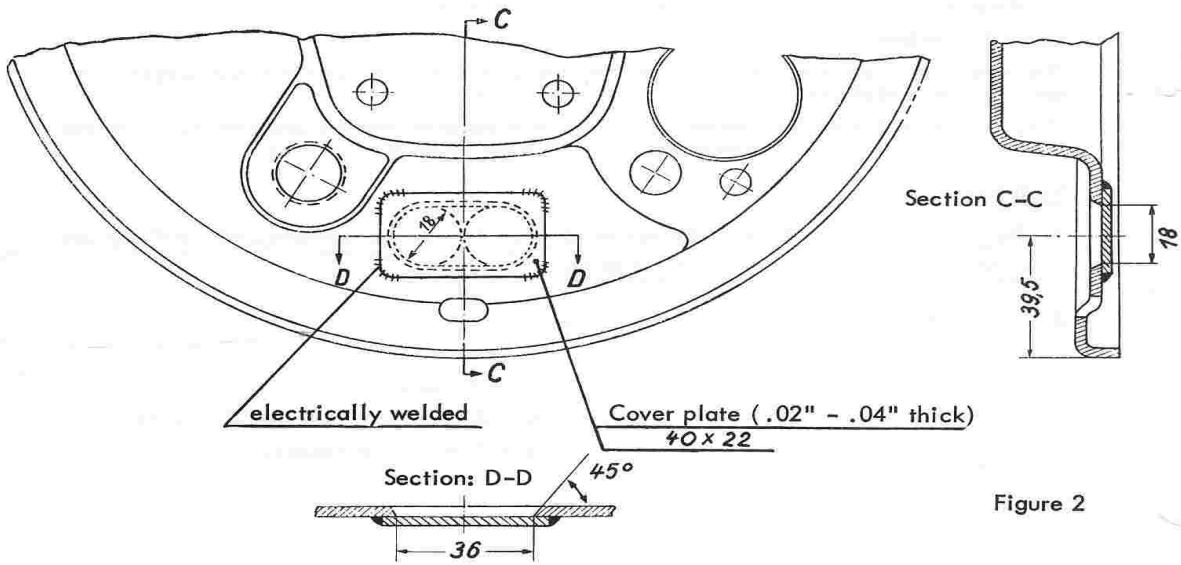


Figure 2